

INSTALLATION GUIDE



THE PRODUCT

One simple system

Nature Impact® Roof is a modern system for sedum roofs. The solution includes drainage, growth media and vegetation in one system. It is very easy to install and no special tools or knowledge is required. The system ensures a healthy and well-looking green roof instantaneously. The modules, that our system consists of, is laid rapidly and effectively on top of the roof membrane.

The modules are laid very close together, earth-to-earth contact, and the exposed root ball is now our security that the whole roof will grow together into a complete surface. The quick installation maintains a sustainable economy for the builder/roofer as well for the entire project. Both man-hours and the hire for a crane is kept to a minimum provides an excellent benchmark in comparison to the total economy of laying a traditional green roof.

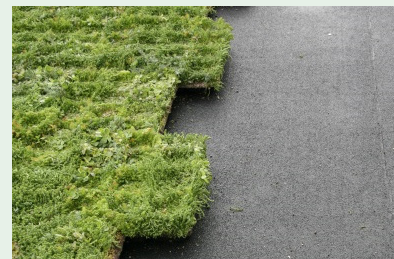
INSTALLATION



1. Upon receipt, the modules should be inspected. The wrap on the pallets should be removed at once after they are transferred to the roof.

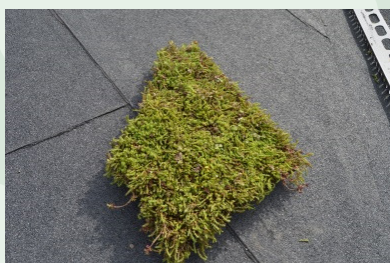


3. The installation must take place as soon as possible after receipt. No later than 48 hours after receipt.



3. 2. The modules are placed regular coursed, edge to edge.

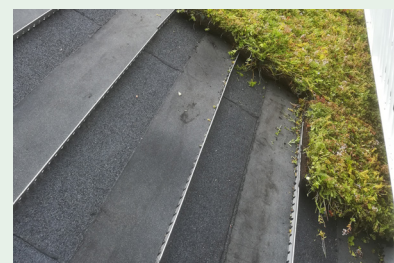
IMPORTANT: Check if there is full earth to earth contact, top up if necessary with growth medium. *(a bag of growth medium is supplied)*



4. The modules are cut to size as needed, e.g. with large insulation knife. Cut against a cut-resistant substrate. Never cut directly against the membrane.



5. Cut edges are not allowed placed against the edge finish or against a leaf catcher with drainage holes.



6. On roofs with a slope >15 degrees, support profiles must be welded on to prevent modules slipping. *See diagram for mounting on pitched roofs.*

The support rails are fixed with roofing felt.



7. When installing against Nature Impact® Roof's leaf catcher, the modules must be placed all the way to the edge of the leaf catch. Rounded stones are not used between the leaf catch and modules, as this will reduce the drainage capacity.



8. For valley gutters and the like, a support profile is welded on to which the modules are laid up against.

With our 60 and 80 mm solution, you can mount the sedum trays directly up to the skylight and surrounding buildings since the systems are fire approved with BROFF (t1) and BROOF(t2).



9. The installation must be finished with a gable profile or with an 80 mm stern edge against the gable.

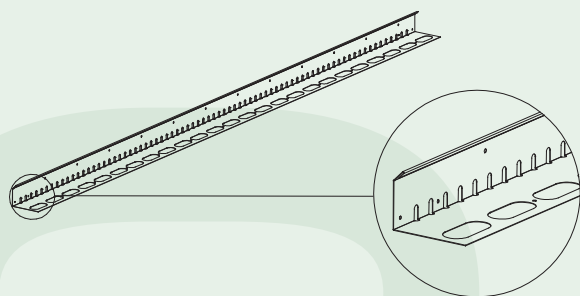
IMPORTANT: After complete installation, the roof must be inspected to ensure full earth-to-earth contact between all modules.

SLOPING ROOF > 15 DEGREES

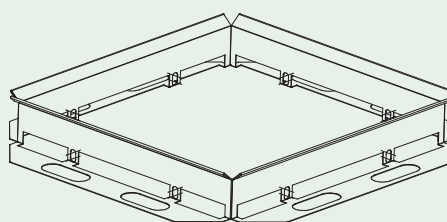
Slope degree	Cm between profiles	Modules between profiles
15 - 20	237	6
20 - 25	158	4
25 - 30	79	2
30 - 50	39,5	1

The diagram is only indicative, as the use of support rails is project dependent.
Contact Nature Impact A/S for further information.

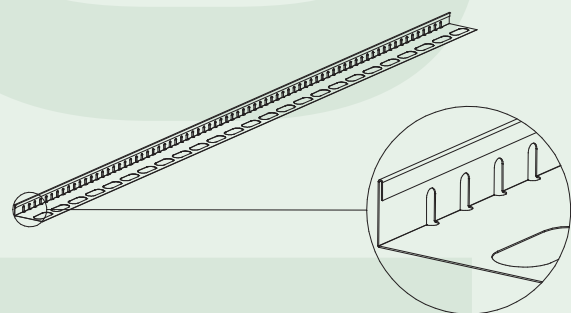
PROFILES



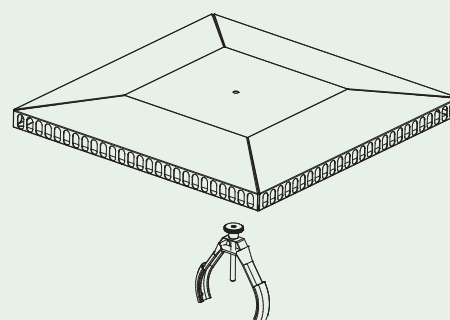
• Edge/End profile



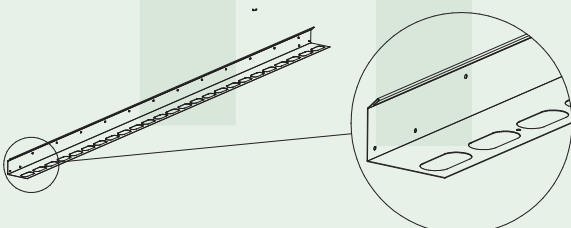
• Leaf Catcher frame



• Support profile



• Leaf Catcher



• Gable profile